

Description

Ultra Precision Strain Gage based 20510 Crane Load Cell is versatile, compact and rugged. It is used for tension measurements, Crane weighing. It is used in tension mode only. Tension Loading can be done with Dee / Bow Shackle & Hook. It is available in 7.5 Tf to 30 Tf capacities.

Features

- 7.5, 10, 15, 20, 25, 30 TF Capacities available.
- High Alloy Tool Steel construction for resistance against shock and overload.
- Perpendicular hole design helps in minimizing external moments effects and improves safety & accuracy.
- It is light weight and portable.
- High Temperature version for foundry applications is available upon request.
- Can be designed to fit your dimensional needs.

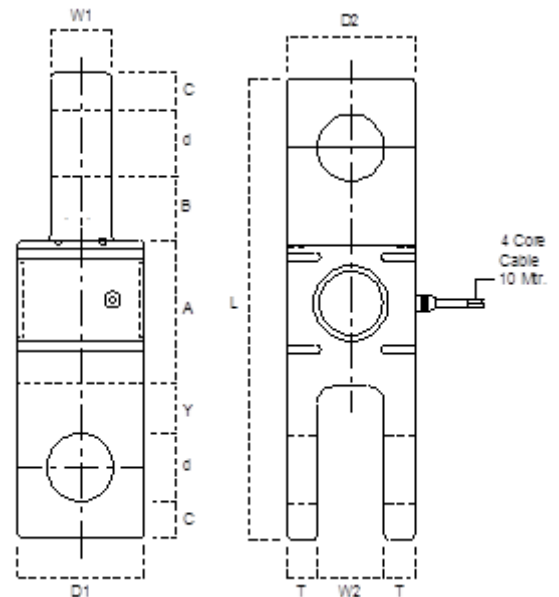
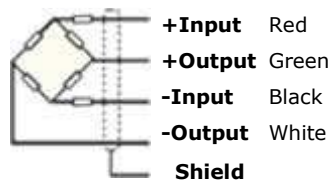
Applications

- To measure rope tension by inserting as a link in to the line.
- To measure towing force of the vehicles and Ships.
- Force Measurement Tension Dynamometer.
- Hanging & Crane Scale.
- Material handling equipments. →Cargo handling in Ship Yards.

Performance Specification

Standard Capacities	7.5, 10, 15, 20, 25, 30 TF.
Excitation Voltage	10 VDC- Maximum 15 VDC
Nominal Output	1.0 m V/ V
Non - Linearity	< ±0.15% FSO
Hysteresis	< ±0.05% FSO
Non-Repeatability	< ±0.025% FSO
Creep (30 minutes)	< ±0.05% FSO
Zero Balance	±1.0% FSO
Input Resistance	780 ± 15 Ohms
Output Resistance	700 ± 3 Ohms
Insulation Resistance (50 VDC)	> 1000 Mega Ohms
Cable Length (4 Core Screened)	10 Mtrs
Safe Overload of Rated Capacity	150%
Ultimate Overload of Rated Capacity	200%
Temp. Compensated Range	0-60 °C
Temperature Effect on Output	< 0.0025% FSO/ °C
Temperature Effect on Zero	< 0.004% FSO/ °C
Deflection	< 0.4 mm at FSO
Finish & Construction	Electroless Nickel Plated Tool Steel
Environmental Protection Class	IP65

Electrical Termination



CAPACITY TF	L	D1/D2	W1	W2	T	d	C	B	A	Y	Suggested Shackle-Crosby Or equivalent	Suggested Hook-Crosby Or equivalent
7.5, 10	210	63	48	35	14	36	15	15	60	33	12T-G/S-209	10.3T-S/L-1327
15, 20	265	78	58	45	16.5	42	24	24	60	49	17T-G/S-209,30T-G/S-2140	20T-S/L-1327
25, 30	280	115	58	48	33.5	42	24	24	60	64	30T-G/S-2140	27.1T-S/L-1327

Specification are subject to change.

All dimensions are in mm.

SEEGATE CORPORATION

Swastik House , Building No.382 , 3rd Floor,
 Room No.7 , Near Lamington Road Police
 Station , Grant Road (E) . Mumbai -400007.

Tel - 022-40044443 Mobile - 7021525891 , 797338650

Email -sales@seegatecorp.com. Website - www.seegateloadcell.com

