

model

# 80210

## DOUBLE ENDED SHEAR BEAM LOAD CELL



### FEATURES :

- ❖ 10Tf to 100Tf Capacities
- ❖ Low Profile Design
- ❖ Electroless Nickel Plated High Alloy Tool Steel Construction
- ❖ Complete Environmental Protection
- ❖ Weigh Module - WM-III Available Optionally for Cell Mounting

### APPLICATIONS :

- ❖ Truck Scale
- ❖ Weighbridge

### DESCRIPTION :

The model 80210, Double Ended Shear Beam Load Cell, is readily capable for tough environments associated with truck scales. Its construction of high alloy tool steel provides optimum protection under impact loading and adverse conditions. The cell is environmentally protected with waterproof seal and is electroless nickel plated to assure resistance against corrosion.

### PERFORMANCE SPECIFICATION :

<b>Standard Capacities (Tonf.)</b>	: 10, 15, 20, 30, 45, 75, 100
<b>Excitation Voltage</b>	: 10 VDC - Maximum 15 VDC
<b>Nominal Output</b>	: 3.0 mV/V
<b>Non-Linearity</b>	: < ± 0.025 % FSO (Full Scale Output)
<b>Hysteresis</b>	: < ± 0.02 % FSO
<b>Non-Repeatability</b>	: < ± 0.01 % FSO
<b>Creep (30 minutes)</b>	: < ± 0.03 % FSO
<b>Zero Balance</b>	: ± 1.0 % FSO
<b>Input Resistance</b>	: 770 ± 20.0 Ohms
<b>Output Resistance</b>	: 700 ± 7.0 Ohms
<b>Insulation Resistance</b>	: > 1000 Meg Ohms at 50 VDC
<b>Safe Overload</b>	: 150 % of Rated Capacity
<b>Ultimate Overload</b>	: 300 % Rated Capacity
<b>Allowable Side Load</b>	: 50 % of Rated Capacity
<b>Side Load Discrimination :</b>	: 500:1
<b>Temperature</b>	: 0-60° C
<b>Compensated Range</b>	
<b>Temperature Effect on Output</b>	: < 0.0015 % FSO/ °C
<b>Temperature Effect on Zero</b>	: < 0.0020 % FSO/°C
<b>Deflection</b>	: < 0.5 mm at FSO
<b>Finish &amp; Construction</b>	: Electroless Nickel Plated Tool Steel
<b>Environmental Protection Class</b>	: IP68

Provided with surge protection from transient over voltage caused by lightning and power supply faults

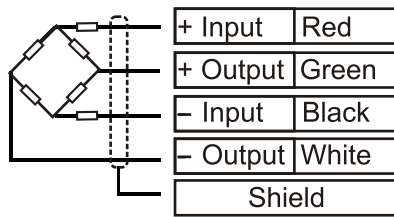


**ADI ARTECH**  
TRANSDUCERS PVT. LTD.

A Joint venture with  
ARTECH INDUSTRIES INC., U.S.A.



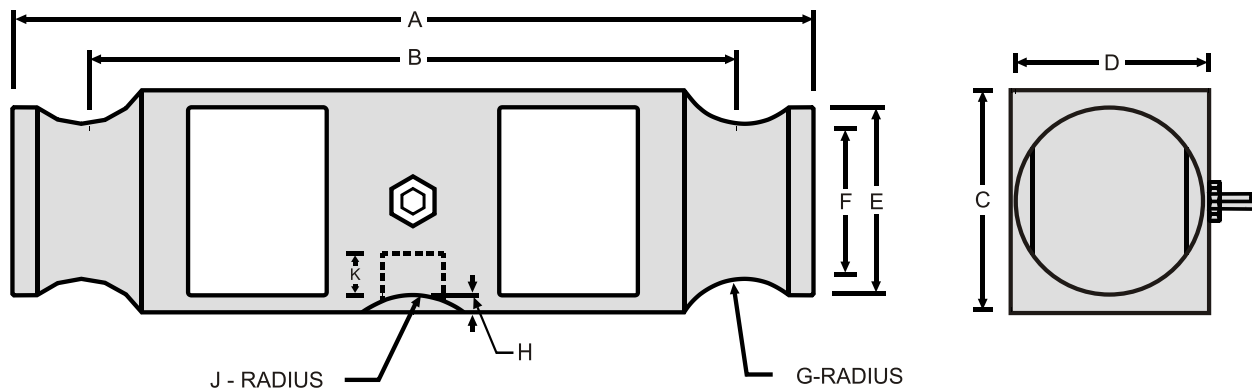
**ELECTRICAL TERMINATION**



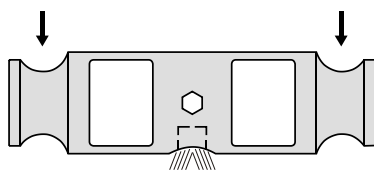
**4 CORE SCREENED CABLE**

CAPACITY Tf	A	B	C	D	E	F	G	H	J	K	Cable mtrs
10 to 45	260	216	72	64	61	52	25	6	25	13	20
75, 100	292	254	86	76	70	60	38	10	38	20	20

All dimensions are in mm.



ARROWS SHOW LOAD DIRECTION FOR +VE OUTPUT



**SEEGATE CORPORATION**

Swastik House , Building No.382 , 3rd Floor,  
Room No.7 , Near Lamington Road Police  
Station , Grant Road (E) . Mumbai -400007.

Tel - 022-40044443 Mobile - 7021525891 , 797338650

Email - [sales@seegatecorp.com](mailto:sales@seegatecorp.com). Website - [www.seegateloadcell.com](http://www.seegateloadcell.com)