

MODEL**UNIVERSAL PAN CAKE LOAD CELL – 90610 – T****Description**

90610 – T is pancake type load cell & it is strain gage based sensor with temperature compensation over 0 to 60°C. It is precision measuring sensor & is used as reference standard load cell in metrology laboratory for calibrating other force sensing devices & uniaxial testing machines. This is constructed from SS 17-4 PH / High Tensile grade tool steel suitable for harsh industrial applications. It is sealed for IP65 protection class and it has long life. It is available with integral thread for axial loading. This can be supplied optionally at an extra cost with matched threaded base plate suitable for tension/compression applications.

Features

50 Kgf to 500Tf Capacities offered
 Can be customized with Dual Bridge construction

Low profile design for Tensile & Compression force measuring
 6 Core cable for precision measurement can be offered optionally

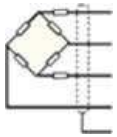
Applications

Can be used as reference standard load cell
 Fatigue testing
 Industrial Automation
 Research

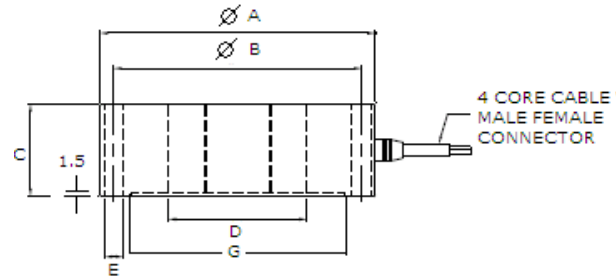
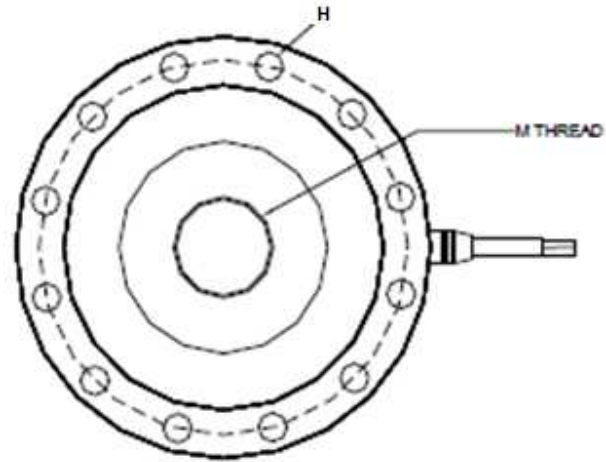
Material testing
 Force Calibration
 Robotics
 Static & Dynamic Force Measurement

Performance Specification

Standard Capacities (TF)	0.05,0.1,0.2,0.3,0.5,0.75,1,1.5,2,3,5,10,20,30,50,75,100,150,200,250,300,500
Excitation Voltage	10 VDC- Maximum 15 VDC
Nominal Output	2.0 m V/ V
Non - Linearity	< ±0.1% FSO (Full Scale Output)
Hysteresis	< ±0.15% FSO
Non-Repeatability	< ±0.1% FSO
Creep (30 minutes)	< ±0.04% FSO
Zero Balance	±1.0% FSO
Input Resistance	770 ± 20 Ohms 2T & Above 390 ± 10 Ohms up to 1T
Output Resistance	700 ± 7 Ohms 2T & Above 390 ± 10 Ohms up to 1T
Cable Length	5 meters
Insulation Resistance (50 VDC)	> 1000 Mega Ohms
Safe Overload of Rated Capacity	150%
Ultimate Overload of Rated Capacity	200%
Allowable Side Load	50%
Temp. Compensated Range	0-60°C
Temperature Effect on Output	< 0.005% FSO/ °C
Temperature Effect on Zero	< 0.005% FSO/ °C
Deflection	< 0.4 mm at FSO

Electrical Termination

+Input Red
+Output Green
-Input Black
-Output White
Shield



* Tool Steel – Electroless Nickel plated Tool Steel

Capacity – Tf	A	B	C	D	G	E DIA. X H PLCS.	M Thread	*MOC	IP Protection Class
0.05,0.1,0.2,0.3,0.5,0.75,1	50	42	25	15	34	4.2 x 4	12 x 1.25	SS 17-4 PH	IP 68
1.5,2,3,5	90	70	30	23	55	6.2 X 8	16 X 1.5	SS 17-4 PH	IP 68
10,15	115	90	40	42	72	10.4 X 8	30 X 2	SS 17-4 PH	IP 68
20, 30	155	125	50	61	100	12.7 X 8	39 X 2	SS 17-4 PH	IP 68
50	205	165	60	95	142	12.7 X 16	42 X 2	SS 17-4 PH	IP 68
75,100	280	228	80	125	172	16.5 X 16	72 X 2	Tool Steel	IP 65
150, 200	305	241	90	140	200	21 X 16	90 X 3	Tool Steel	IP 65
300	394	322	120	196	267	21 X 32	120 X 4	Tool Steel	IP 65
450	450	390	150	245	327	25 X 32	150 X 4	Tool Steel	IP 65

Specifications are subject to change without prior notice

Note: All Dimensions are in mm

**SEEGATE CORPORATION**

Swastik House , Building No.382 , 3rd Floor,
 Room No.7 , Near Lamington Road Police
 Station , Grant Road (E) . Mumbai -400007.

Tel - 022-40044443 Mobile - 7021525891 , 797338650

Email -sales@seegatecorp.com. Website - www.seegateloadcell.com

