

# model 30310/30310-SS **RECTANGULAR SHEAR BEAM LOAD CELL**



## FEATURES :

- ❖ 100 Kgf. to 10000 Kgf. Capacities offered
- ❖ Complete Environmental Protection -IP67 Class
- ❖ Standardized output (3.0 ± 0.25%) available on request
- ❖ **Also available in stainless steel construction Model - 30310-SS, suitable for hygienic applications like Food, Dairy & Pharmaceutical Industries and Corrosive Chemical**

## APPLICATIONS :

- ❖ Low Profile Floor Scales.
- ❖ Tank, Hopper & Bag Weighing
- ❖ Force & Tension Measurement
- ❖ Industrial Automation
- ❖ Pallet Scale.



**ADI ARTECH**  
TRANSDUCERS PVT. LTD.

A Joint venture with  
ARTECH INDUSTRIES INC., U.S.A.

## DESCRIPTION :

This is a single ended Shear Beam, Strain Gage based, Load Cell designed for Multiple use in low profile platform scales & in tank, bin and hopper weighing systems. It is constructed from high alloy tool Steel for excellent resistance to shock and overload. The cell is sealed against moisture ingress for use in wash-down areas and it is Electroless Nickel plated for corrosion resistance. It is low cost ideal Load Cell for industrial automation applications. **Model 30310-SS is Provided in Hardenable Stainless Steel-17-4 PH Construction.**

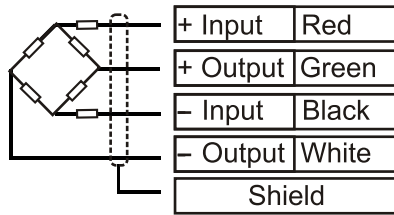
## PERFORMANCE SPECIFICATION :

<b>Standard Capacities (Kgf.)</b>	: 100*, 150*, 200*, 250*, 300, 500*, 750
<b>(Tf)</b>	: 1, 1.5, 2, 2.5, 3, 5, 7.5, 10
<b>Excitation Voltage</b>	: 10 VDC - Maximum 15 VDC
<b>Nominal Output</b>	: 3.0 mV/V
<b>Non - Linearity</b>	: < ± 0.025 % FSO (Full Scale Output)
<b>Hysteresis</b>	: < ± 0.02 % FSO
<b>Non-Repeatability</b>	: < ± 0.01 % FSO
<b>Creep (30 minutes)</b>	: < ± 0.03 % FSO
<b>Zero Balance</b>	: ± 1.0 % FSO
<b>Input Resistance</b>	: 390 ± 3.5 Ohms
<b>Bridge Resistance</b>	: 350 ± 3.5 Ohms
<b>Insulation Resistance</b>	: > 1000 Mega Ohms at 50 VDC
<b>Safe Overload</b>	: 150 % of Rated Capacity
<b>Ultimate Overload</b>	: 300 % of Rated Capacity
<b>Allowable Side Load</b>	: 50 % of Rated Capacity
<b>Side Load Discrimination</b>	: 500 : 1
<b>Temperature</b>	: 0-60° C
<b>Compensated Range</b>	
<b>Temperature Effect on Output</b>	: < 0.0015 % FSO/ °C
<b>Temperature Effect on Zero</b>	: < 0.0020 % FSO/ °C
<b>Deflection</b>	: < 0.5 mm at FSO
<b>Tightening Torque</b>	: Please refer table on back page
<b>Finish &amp; Construction</b>	: <b>30310</b> - Electroless Nickel Plated Tool Steel - <b>30310-SS</b> - Hardenable Stainless Steel-17-4 PH
<b>Environmental Protection Class</b>	: IP67

\*Bending Beam Design



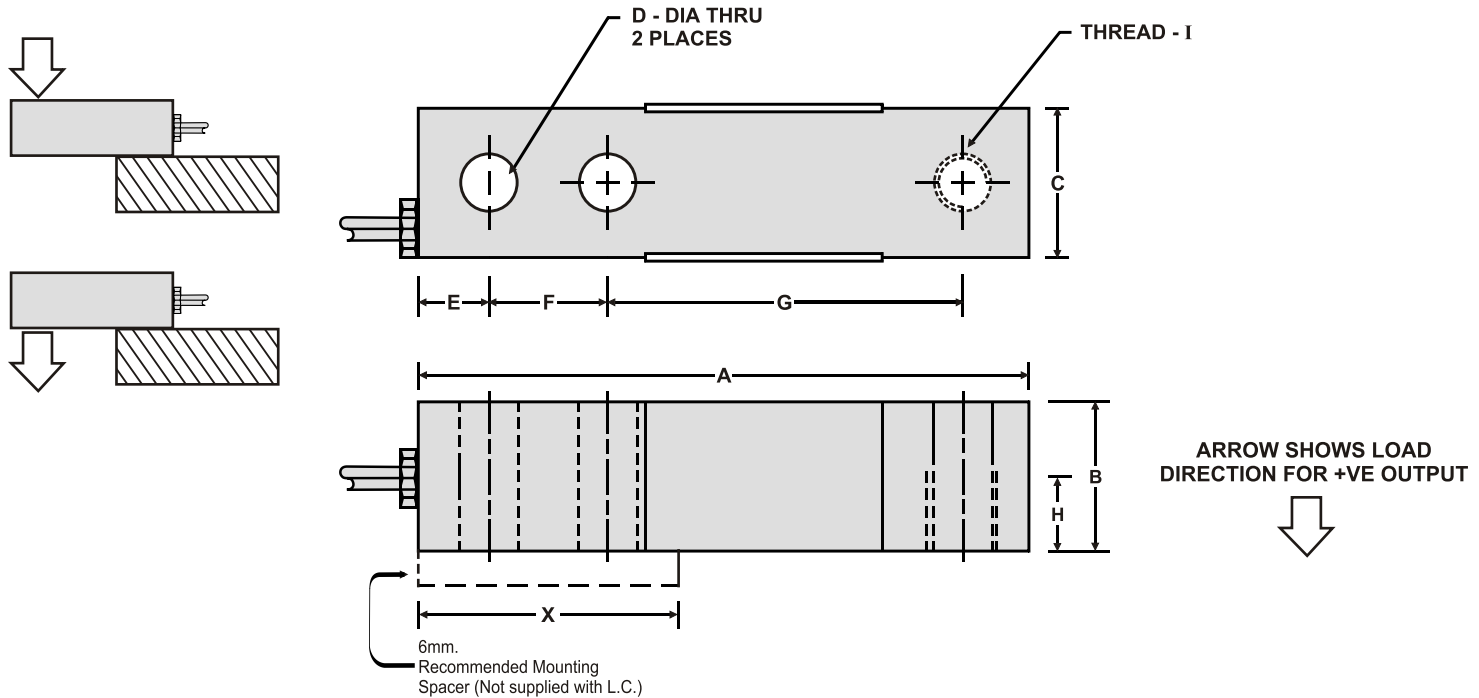
**ELECTRICAL TERMINATION**



4 CORE SCREENED CABLE

CAPACITY Kgf.	A	B	C	D	E	F	H	G	I	X	Torque m. kg.	Cable Length Mtrs.
100 to 2500	130	32	32	13	15	25	15	75	M12 x 1.25	55	2.5	5
3000 to 5000	172	38	38	21	19	38	19	95	M20 x 1.50	76	5	10
7500 to 10000	223	50	50	25	25	50	25	120	M24 x 2.00	100	10	20

All dimensions are in mm.



# SEEGATE CORPORATION

Swastik House , Building No.382 , 3rd Floor,  
Room No.7 , Near Lamington Road Police  
Station , Grant Road (E) . Mumbai -400007.

Tel - 022-40044443 Mobile - 7021525891 , 797338650

Email - [sales@seegatecorp.com](mailto:sales@seegatecorp.com). Website - [www.seegateloadcell.com](http://www.seegateloadcell.com)