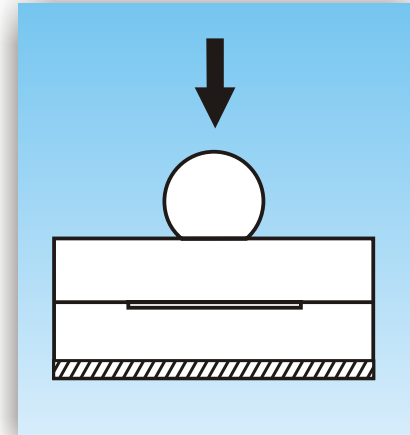


model

70610

DOUBLE ENDED SHEAR BEAM LOAD CELL



FEATURES :

- ❖ 10 Tf. to 30 Tf. Capacities.
- ❖ Complete environmental Protection - IP68 class.
- ❖ Standard output 2.0m V/V available.
- ❖ Hardened tool steel construction.
- ❖ Good side force and shock resistance.
- ❖ Full mounting hardware are provided with the load cell.

APPLICATIONS :

- ❖ Truck weighbridge
- ❖ Tank and hopper weighing
- ❖ Tensile testing

DESCRIPTION :

- ❖ 70610 load cells are suitable for truck, tank and hopper weighing.
- ❖ This is constructed from electroless nickel plated heat treated tool steel suitable for harsh industrial applications.
- ❖ Cup and steel ball mounted mechanism is self restoring and self centering.
- ❖ Transient voltage protection is provided for protection against lightning and line voltage faults.

PERFORMANCE SPECIFICATION :

Standard Capacities (Tf.)	: 10, 20, 30
Excitation Voltage	: 10 VDC - Maximum 15 VDC
Nominal Output	: 2.0 mV/V
Non - Linearity	: < ± 0.025 % FSO (Full Scale Output)
Hysteresis	: < ± 0.02 % FSO
Non-Repeatability	: < ± 0.01 % FSO
Creep (30 minutes)	: < ± 0.03 % FSO
Input Resistance	: 770 ± 20 Ohms
Output Resistance	: 770 ± 7 Ohms
Insulation Resistance (50VDC)	: > 1000 Mega Ohms
Cable Length (4 core)	: 15 mtr.
Safe Overload	: 150 %
Ultimate Overload of Rated	: 300 %
Allowable Side Load	: 50%
Side Load Discrimination	: 500:1
Temp. Compensated Range	: 0-60 °C
Temp. Effect on Output	: < 0.0015 % FSO/ °C
Temp. Effect on Zero	: < 0.0020 % FSO/ °C
Deflection	: < 0.5 mm at FSO
Tightening Torque	: 10 m.kg.
Finish & Construction	: Electroless Nickel Plated Tool Steel
Environmental Protection Class	: IP68
Transient Voltage Protection	: Provided

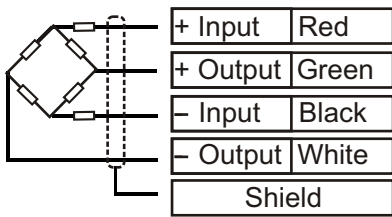


ADI ARTECH
TRANSDUCERS PVT. LTD.

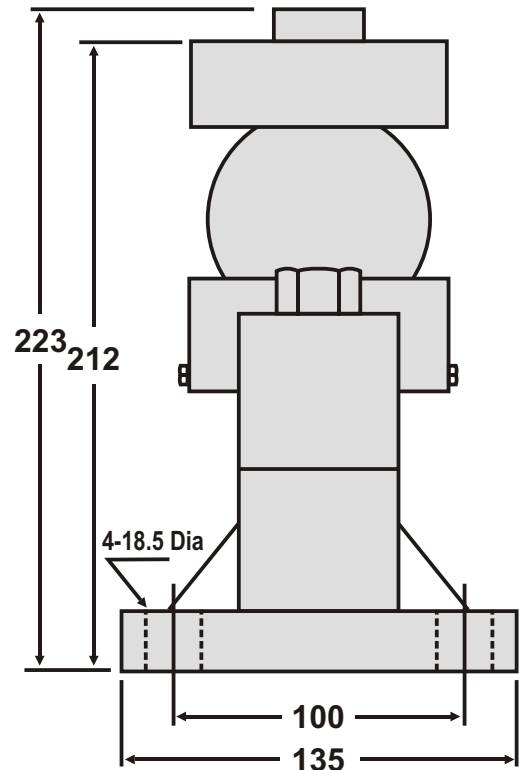
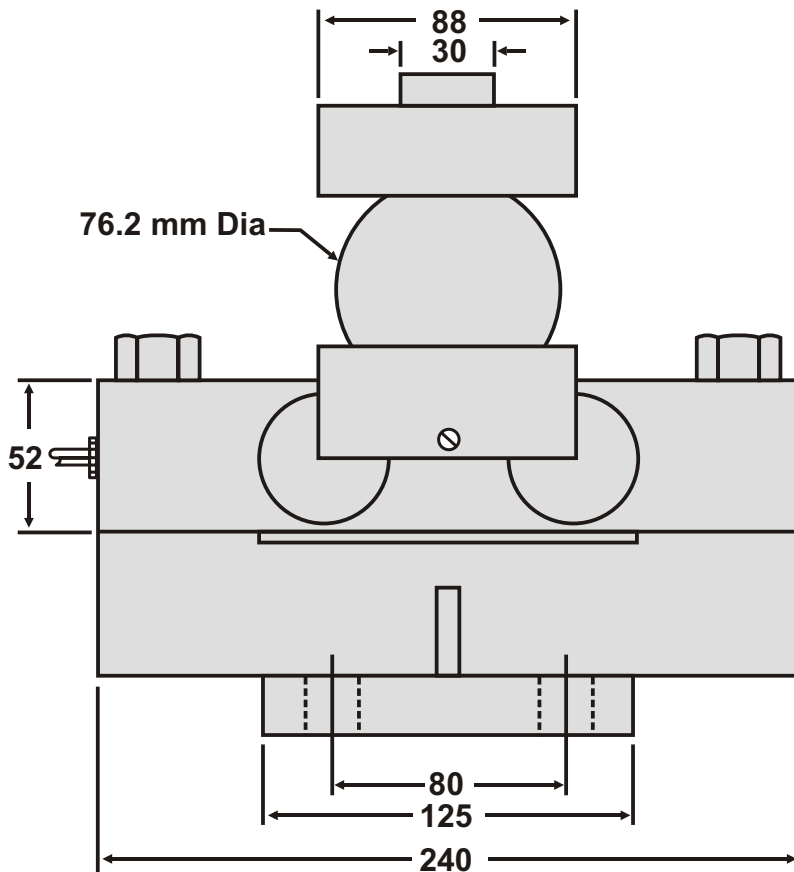
A Joint venture with
ARTECH INDUSTRIES INC., U.S.A.



ELECTRICAL TERMINATION



4 CORE SCREENED CABLE



All dimensions are in mm.



SEEGATE CORPORATION

Swastik House , Building No.382 , 3rd Floor,
Room No.7 , Near Lamington Road Police
Station , Grant Road (E) . Mumbai -400007.

Tel - 022-40044443 Mobile - 7021525891 , 797338650

Email - sales@seegatecorp.com. Website - www.seegateloadcell.com