

# Dongguan South China Sea Electronic Co., Ltd

## CZL301



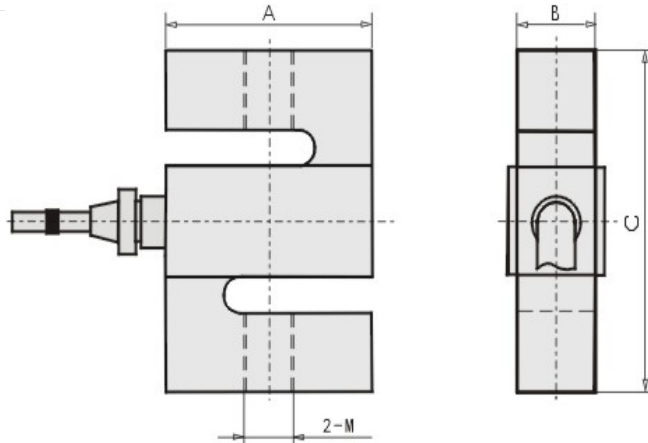
**Rated load(kg):**100~5000

**Main features:** Alloy steel & stainless structure; bellows hermetically sealed by laser, nickel plated, waterproof and anti-corrosion, suitable for multiform environments; suitable for electronic platform scales, hopper scales, and other electronic weighing devies.

**Parameters:**

Precision :C2&C3	Temp. effect on span(%F.S/10 °C): $\pm 0.017 \pm 0.011$
Comprehensive error(%F.S) : $\pm 0.02 \pm 0.03$	Temp. effect on zero(%F.S/10 °C): $\pm 0.023 \pm 0.015$
Rated output(mv/v) : $2.0 \pm 0.04$	Compensated temp. range(°C) : $-10 \sim +40$
Creep(%F.S/30min) : $\pm 0.024 \pm 0.016$	Use temp. range(°C) : $-20 \sim +55$
Zero balance(%F.S) : $\pm 1.0$	Excitation voltage(V) : $9 \sim 12$ (DC)
Input resistance(ohm) : $350 \pm 10$	Safe overload (%F.S) : 150
Output resistance(ohm) : $350 \pm 5$	Ultimate overload (%F.S) : 200
Insulation resistance(Mohm) : $\geq 5000$ (100VDC)	Defend grade : IP66

**Installation size (mm):**



Rated load ( kg )	B	C	A	M
10--50	50.8	12.7	64	M8
100--500	50.8	19	76	M12
1000	50.8	25.4	76	M12
2000--5000	76.2	25.4	108	M18X1.5

**Wiring schematic diagram:**

Red: Input ( + ) White: Output ( - )  
 Black: Input ( - ) Green: Output ( + )  
 Notes: It used 4-core shielded cable( $\phi 5 \times 3000$ mm)

**Load instruction:**

