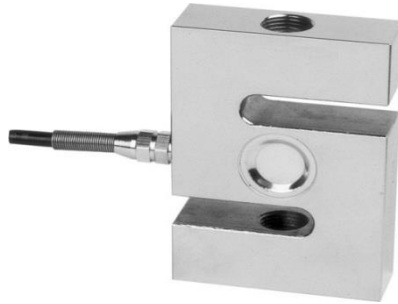




SEEGATE CORPORATION

Swastik House, Bldg no 382, 3rd floor, room no 7 near lamington road police station, grant roan, Mumbai -400007. Tel -022-23850846/47 www.seegatecorp.in. seegatecorp@gmail.com

loadcell name : SC301



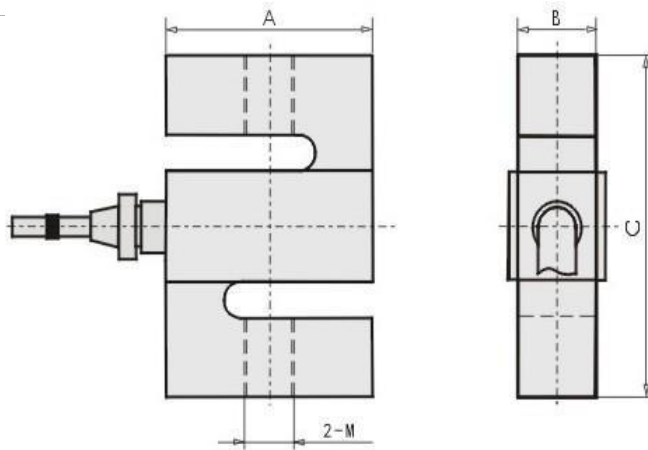
Rated load(kg):100~5000

Main features: Alloy steel & stainless structure; bellows hermetically sealed by laser, nickel plated, waterproof and anti-corrosion, suitable for multiform environments; suitable for electronic platform scales, hopper scales, and other electronic weighing devies.

Parameters:

- | | |
|---|---|
| Precision :C2&C3 | Temp. effect on span(%F.S/10?): $\pm 0.017 \pm 0.011$ |
| Comprehensive error(%F.S) : $\pm 0.02 \pm 0.03$ | Temp. effect on zero(%F.S/10?): $\pm 0.023 \pm 0.015$ |
| Rated output(mv/v) : 2.0 ± 0.04 | Compensated temp. range(?) : -10~+40 |
| Creep(%F.S/30min) : $\pm 0.024 \pm 0.016$ | Use temp. range(?) : -20~+55 |
| Zero balance(%F.S) : ± 1.0 | Excitation voltage(V) : 9~12(DC) |
| Input resistance(ohm) : 350 ± 10 | Safe overload (%F.S) : 150 |
| Output resistance(ohm) : 350 ± 5 | Ultimate overload (%F.S) : 200 |
| Insulation resistance(Mohm) : $\geq 5000(100VDC)$ | Defend grade : IP66 |

Installation size (mm):



Rated load (kg)	B	C	A	M
10--50	50.8	12.7	64	M8
100--500	50.8	19	76	M12
1000	50.8	25.4	76	M12
2000--5000	76.2	25.4	108	M18X1.5

Wiring schematic diagram:

Red: Input (+) White: Output (—)

Black: Input (—) Green: Output (+)

Notes - It used 4-core shielded cable(E5x3000mm)

Load instruction:

